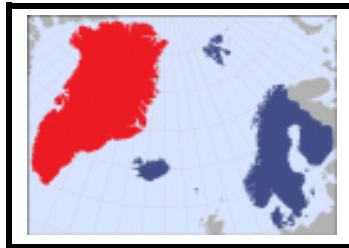


Danmark

Grønland

Færøerne



DK

GL

FO

en  
to  
tre  
fire  
fem

ataaseq  
marluk  
pingasut  
sisamat  
tallimat

ein  
two  
tríggir  
fýra  
fimm

København

Nuuk / Godthåb

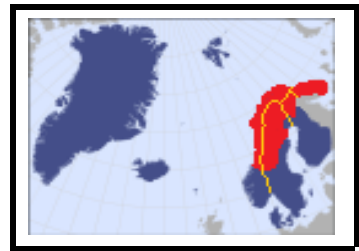
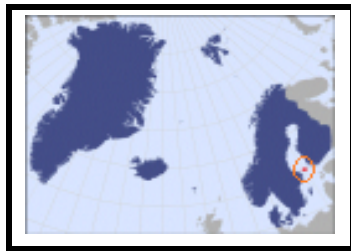
Tórshavn



Finland

Åland

Lapland



**FI**

**AX**

NO / SE / FI / RU

yksi  
kaksi  
kolme  
neljä  
viisi

yksi  
kaksi  
kolme  
neljä  
viisi

akta  
guok  
gålmmå  
niellja  
vihtta

Helsinki / Helsingfors

Mariehamn

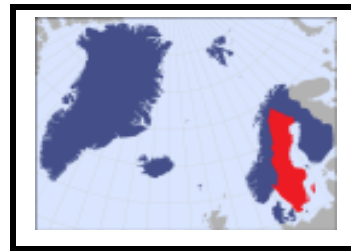
Rovaniemi



Norge

Svalbard

Sverige



NO

SJ

SE

en  
to  
tre  
fire  
fem

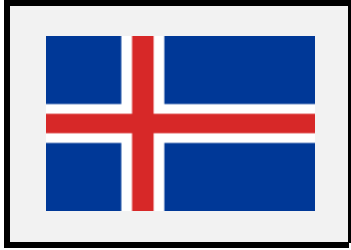
en  
to  
tre  
fire  
fem

ett  
två  
tre  
fyra  
fem

Oslo

Longyearbyen

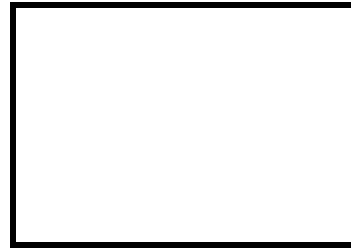
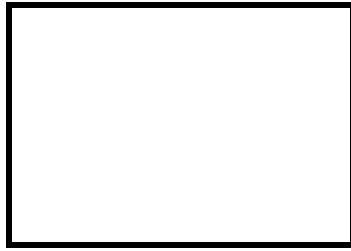
Stockholm



Island



IS



einn  
tveir  
þrír  
fjórir  
fimm



Reykjavík

